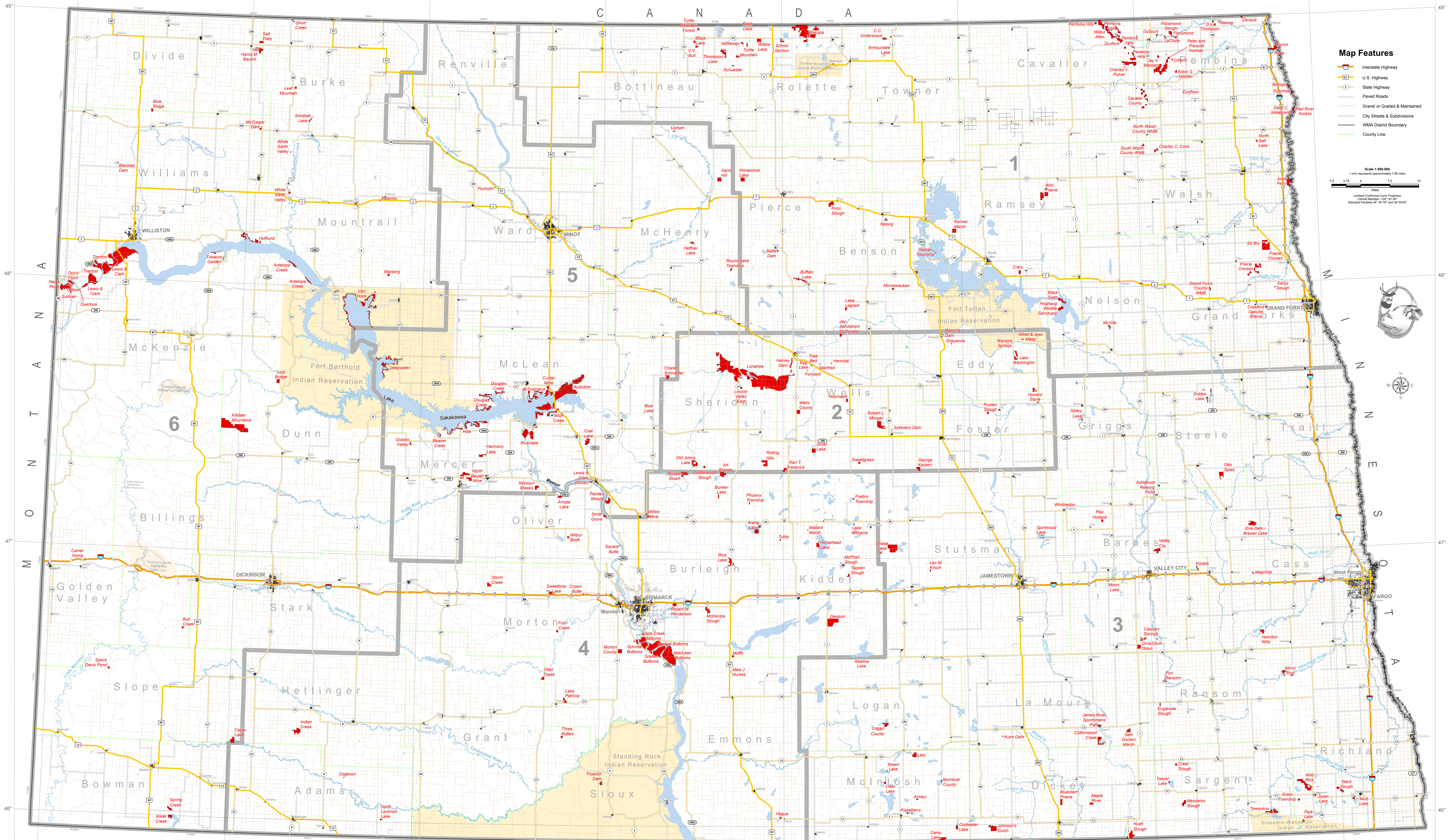


# NORTH DAKOTA GAME & FISH DEPARTMENT WILDLIFE MANAGEMENT AREAS



- Map Features**
- Interstate Highway
  - U.S. Highway
  - State Highway
  - Paved Roads
  - Gravel or Graded & Maintained
  - City Streets & Subdivisions
  - WMA District Boundary
  - County Line

Scale 1:500,000  
1 inch represents approximately 7.50 miles

7.5 3.75 0 3.75 7.5 15  
Miles

Least Squares Conformal Conic Projection  
Central Meridian: 100° 30' 00" W  
Standard Parallels: 46° 30' 00" N and 48° 00' 00" N

